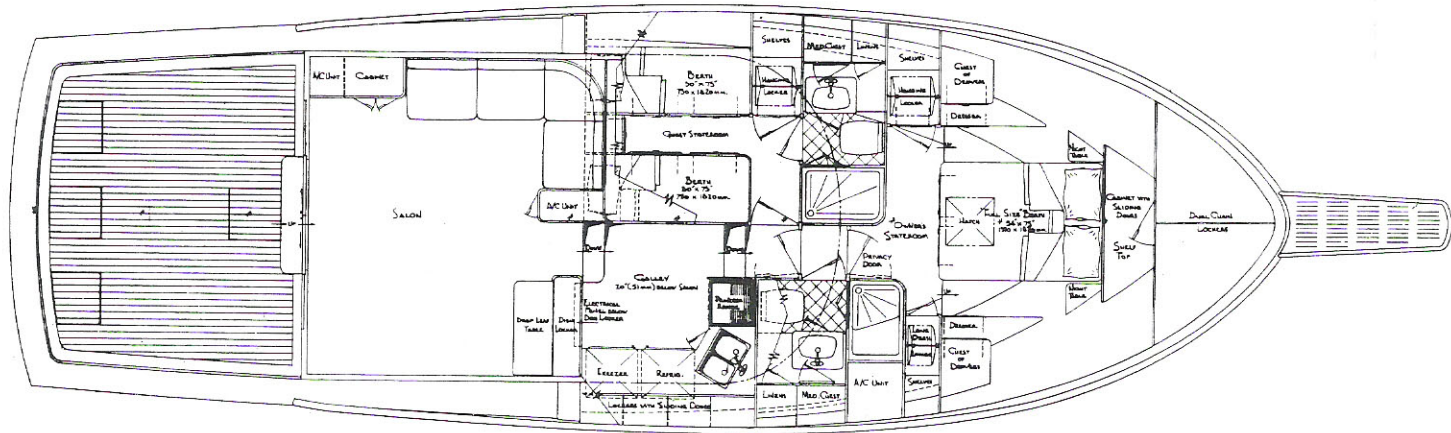


STRIKER 50' SPORTFISHERMAN



CONDENSED SPECIFICATIONS:

- Length overall (less pulpit):..... 50'/15.21M.
- Beam:..... 17'-0"/5.20M.
- Draft:..... 2'-11"/0.88M.
- Freeboard FWD..... 7'-2"/2.18M.
- Freeboard AFT:..... 3'-8"/1.11M.
- Height from waterline:..... 13'-9"/4.23M.
- Displacement—(approximate):..... 30,000 lbs./12,700 Kg.
- Power—(standard): T..... 1100 US Gal./3406 L.
- Fuel capacity:..... 250 US Gal./946 L.
- Fresh water capacity:..... 250 US Gal./946 L.
- Construction: Welded marine aluminum throughout.
- Hull plating thickness:..... 0.3125"/8.0MM. and 0.250"/6.5MM.
- Deck and superstructure thickness:..... 0.187"/5.0MM.
- Sleeping accommodations for:..... SIX
- Head room—forward areas:..... 6'-6"/1.98M.
- Head room—deckhouse:..... 6'-6"/1.98M.

MAJOR STANDARD EQUIPMENT AND FEATURES INCLUDE:

- Two 12 KW diesel generators • 115 V. AC and 12 V. DC wiring throughout • Pressurized water system with electric water heater • Complete Galley with 7.5 cu. ft. refrigerator, 7.5 cu. ft. freezer, electric range with oven and rotisserie • Two complete Head compartments with stall showers • Reverse Cycle Air Conditioning • Teak cockpit floor • Tuna Door in transom • All legally required On-board equipment.

(Interior Color Decor to Owner's Choice)